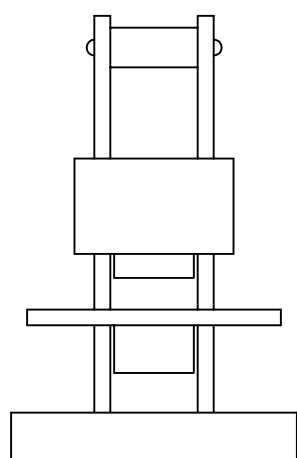
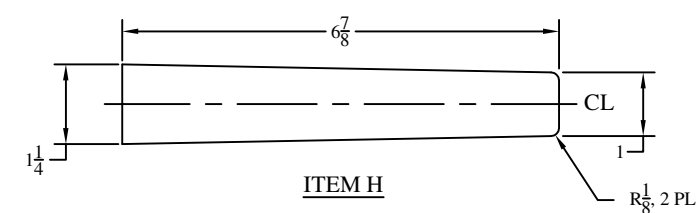
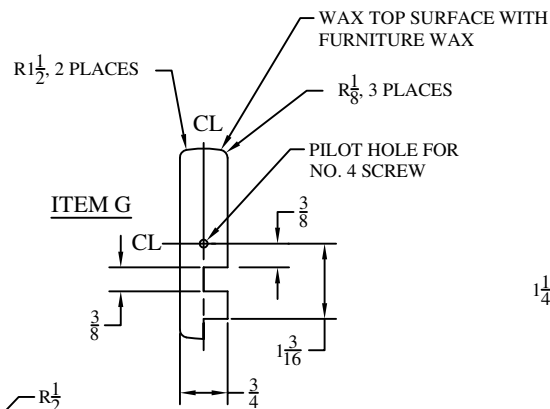
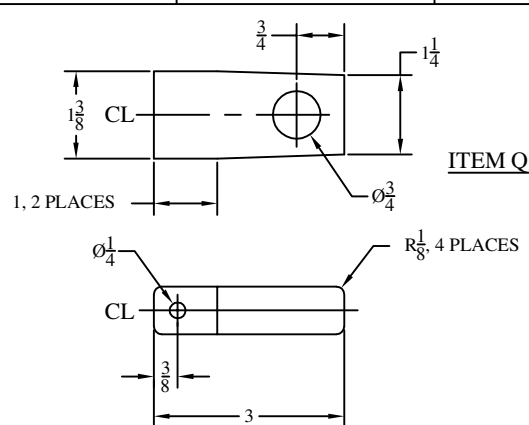
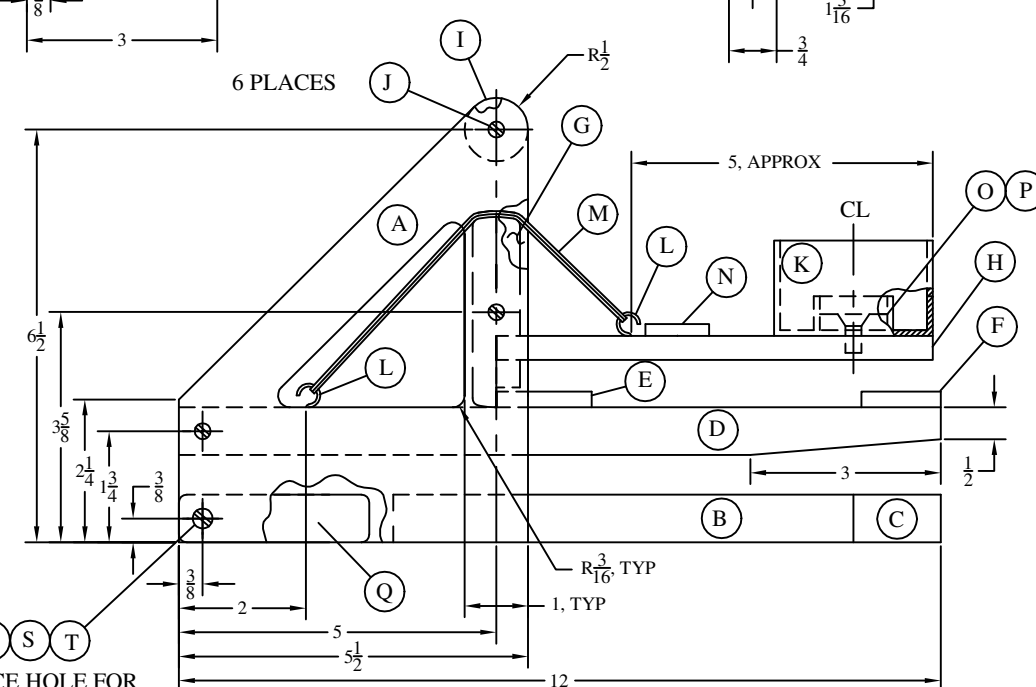


REVISIONS		DATE	APPROVED
ZONE	REV	DESCRIPTION	



SEE SHEET 2 FOR PARTS LIST AND NOTES



CLEARANCE HOLE FOR SCREW IN ITEM'S A

This information is circulated as a service to interested persons; no liability is accepted by RCRV in relation to its safety or applicability in individual cases or in relation to its installation or adaption for which appropriate medical, engineering or other professional services ought to be obtained. Permission is hereby given to reproduce this information sheet, drawing or notes. Please give RCRV and the sponsoring organization credit for any information drawings or notes that are disseminated. RCRV is a voluntary organization which provides assistance to disabled people utilizing the capabilities of retired technical volunteers, professional engineers, technicians and tradesmen.

Rockwell-Collins Retiree Volunteers			
CATAPULT FOR WHEEL CHAIR TRAY			
REGIONAL	DATE	SCALE	REV
		D	
ISSUED	DATE	PROJ. NO.	REV
		00015	
SCALE 1/1		SHEET 1 OF 2	

NOTES:

1. FABRICATE ITEM A IN PAIRS. DRILL HOLES FOR SCREWS, 3 PLACES. HOLES MUST BE TIGHT FIT FOR SCREWS.
2. FASTEN ITEM F TO D. GLUE AND USE BRADS TO SECURE.
3. FASTEN ITEM C TO B IN POSITION SHOWN.
4. FASTEN A TO B WITH GLUE AND BRADS. CAREFULLY ALIGN SCREW HOLES FOR UNIT TO WORK PROPERLY.
5. DRILL PILOT HOLES FOR SCREWS IN ITEMS D, G AND I.
6. GLUE ITEM H IN G. MAKE SURE ITEM IS SQUARE.
7. PLACE ITEMS L AS SHOWN.
8. ASSEMBLE REMAINING PARTS AS SHOWN AND ADD ITEM M AS REQUIRED.
9. RECOMEND # 33 RUBBER BANDS (3 1/2 X 1/8).
10. THIS UNIT WORKS BEST FOR PING-PONG BALLS, GOLF WHIFFLE BALLS OR SIMILAR LIGHT WEIGHT OBJECTS.
11. THIS PROJECT REQUIRES GOOD WORKING PATIENCE.

REVISIONS				
ZONE	REV	DESCRIPTION	DATE	APPROVED

T	1	NO. 10-24	WING NUT
S	1	NO. 10 FLAT	WASHER
R	1	#10-24 X 2 1/2	BOLT
Q	1	.1 3/8 X 3	3/4 PINE
P	1	#4 X 1/2 F. H.	SCREW
O	1	DIA AS REQD	1/4 PLYWOOD
N	1	1 X 1 FOAM RUB	BUMPER
M	AR	RUBBER BANDS	LAUNCHER
L	2	.13/16 MED	SCREW EYE
K	1	SPRAY CAN LID	HOLDER
J	6	NO. 6 X 3/4	R. H. SCREW
I	1	1 X 1 3/8	DOWEL
H	1	1 1/4 X 6 7/8	3/8 HARDWOOD
G	1	1 1/4 X 3	3/4 HARDWOOD
F	1	1 1/4 X 4	1/4 PLYWOOD
E	1	3/4 X 1 1/4	1/4 HARDWOOD
D	1	1 1/4 X 12	3/4 PINE
C	1	1 3/8 X 4 1/2	3/4 PINE
B	1	1 3/8 X 7 1/4	3/4 PINE
A	2	5 1/2 X 7	1/4 PLYWOOD
ITEM	QTY	PART NO. OR MATERIAL	NAME

SEE NOTE 9

This information is circulated as a service to interested persons; no liability is accepted by RCRV in relation to its safety or applicability in individual cases or in relation to its installation or adaption for which appropriate medical, engineering or other professional services ought to be obtained. Permission is hereby given to reproduce this information sheet, drawing or notes. Please give RCRV and the sponsoring organization credit for any information drawings or notes that are disseminated. RCRV is a voluntary organization which provides assistance to disabled people utilizing the capabilities of retired technical volunteers, professional engineers, technicians and tradesmen.

Rockwell-Collins Retiree Volunteers			
<b>CATAPULT FOR WHEEL CHAIR TRAY</b>			
DESIGNED	DATE	SCALE	REV
		D	
DRAWN	DATE	PROJ. NO.	
		00015	
SCALE 1/1		SHEET 2 OF 2	